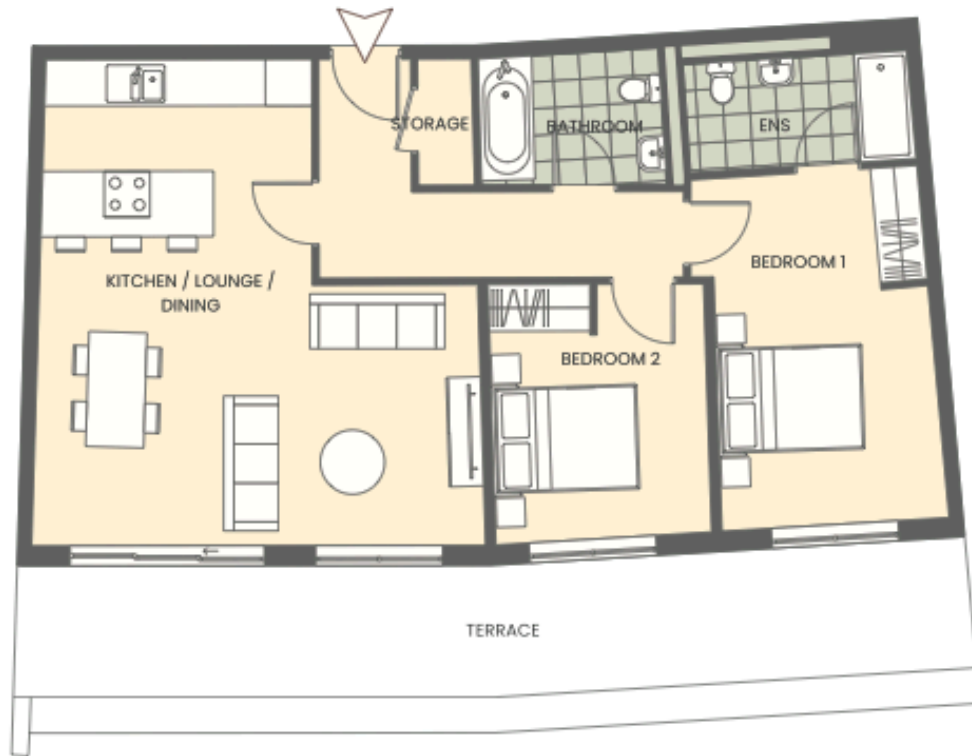




36, Old Coleham Court



36. £629,000



2 bedrooms



2 bathrooms



Penthouse



Parking



Solar



Terrace



897sqft 84sqm



Level 3



South West facing



www.syhomes.co.uk
sharon@syhomes.co.uk
01743 403131



While every attempt has been made to ensure accuracy, all measurements are approximate, not to scale. This floor plan is for illustrative purposes only.